

23-382 SOM Allied Health Hydraulic Passenger Elev - 5-Story - Cab 1 & Cab 2

Site Visit Type	Scope Development Walk	Site Visit Date	12.06.2023
------------------------	------------------------	------------------------	------------

Participants

The following participants were present:

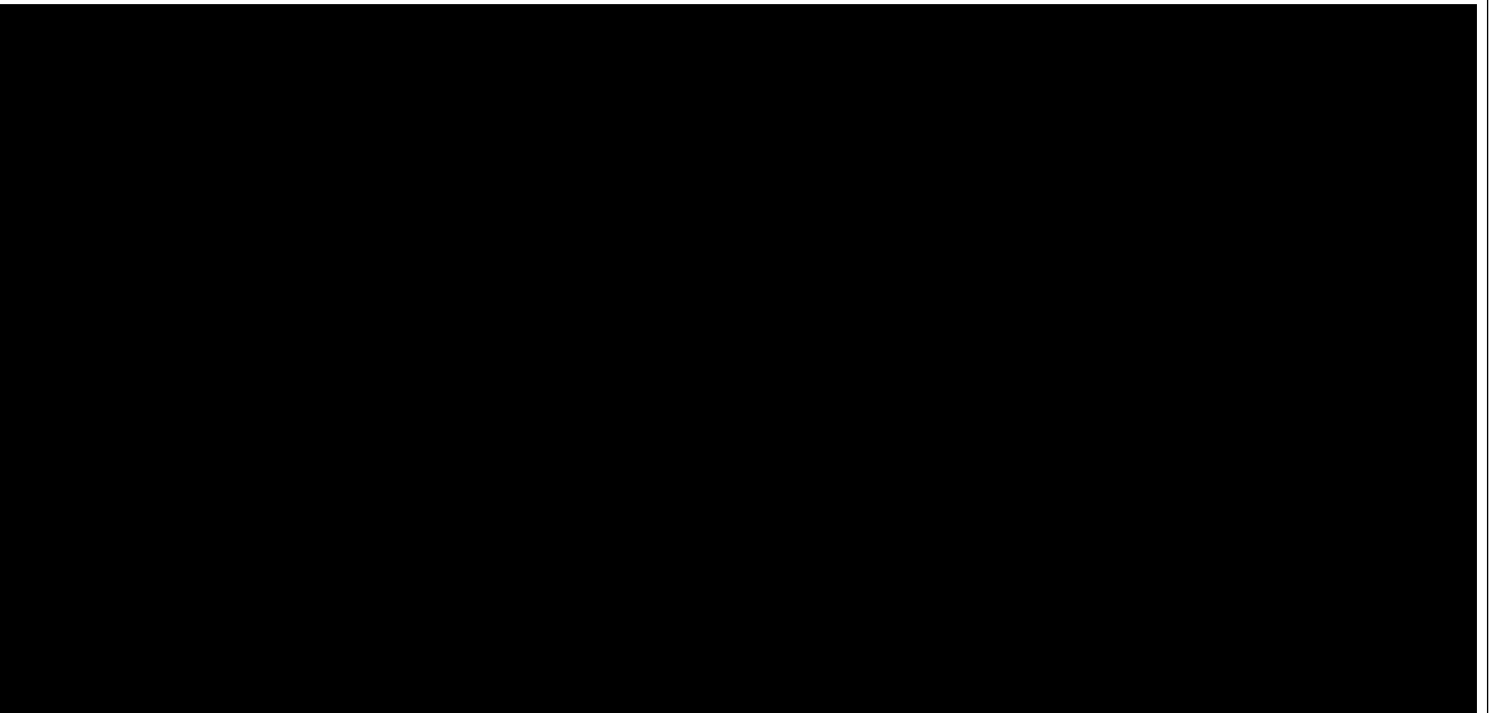
Andrew Roberts, UMB Fire Marshal
Jason Goodman, UMB Project Manager

Observations

A walkthrough between the Office of the Fire Marshal (OFM) and the Project Manager (PM) occurred to look at the current conditions of the elevators and elevator machine rooms in the Allied Health Research Building, General Research Building, Institute of Human Virology, Howard Hall, Health Sciences Research Facility I, and Maryland Bar Center. The purpose of the walkthrough was to identify existing issues and to ensure they are corrected during the construction of Project #23-382. The following items were found:

All Buildings

1. All penetrations through fire-rated Elevator Machine Room walls are not firestopped. Provide firestopping at all existing unsealed penetrations as required by NFPA 1 Section 12.3.3.1.
2. Fireproofing on existing structural members is damaged and/or missing. Repair damaged and missing fireproofing as required by NFPA 1 Section 12.3.3.1.
3. Duct penetrations are not fire/smoke tight and do not appear to have fire dampers. Confirm if required based on HVAC configuration and provide fire dampers as required by NFPA 90A Section 5.3.1 and repair duct penetrations.

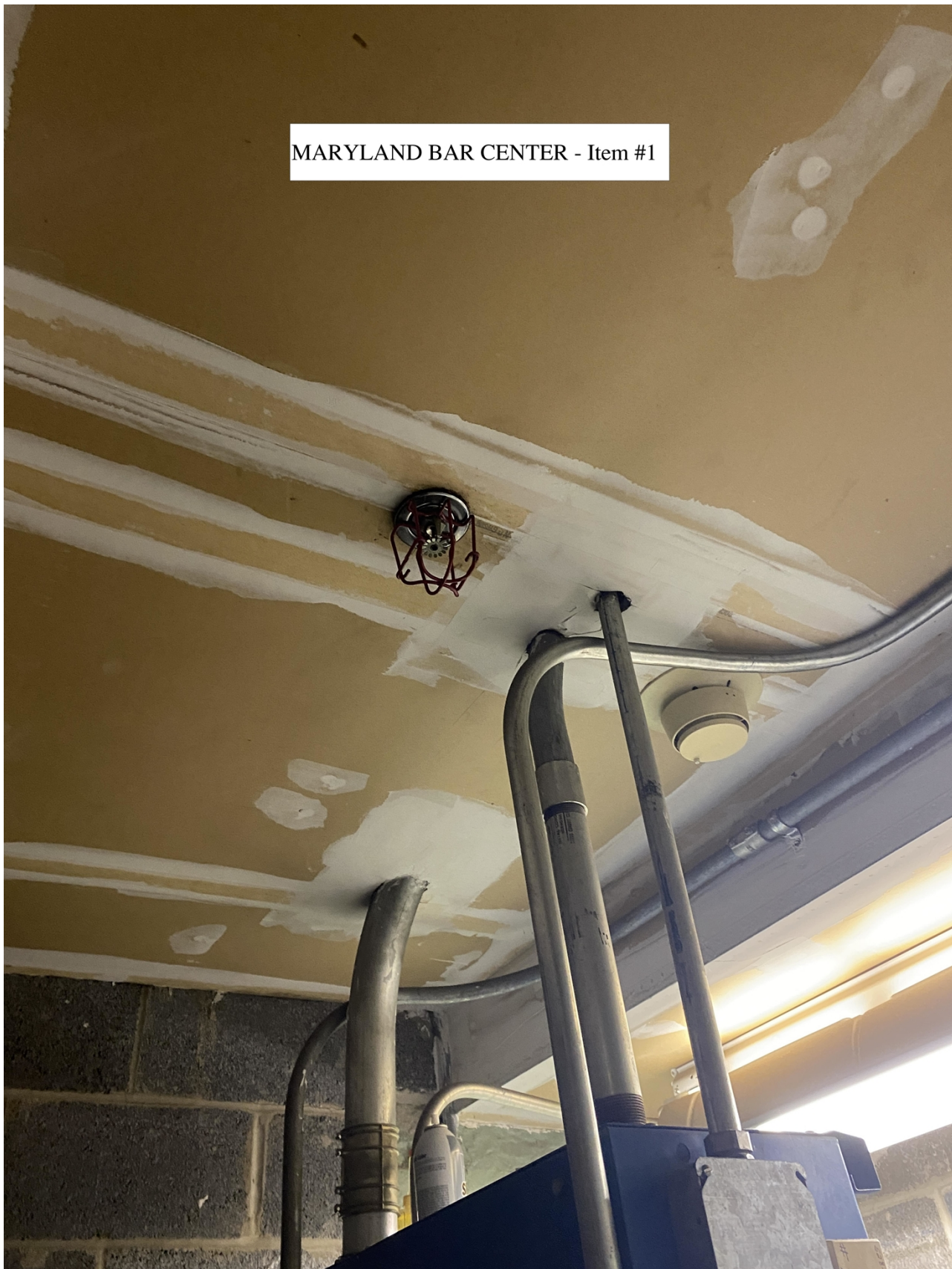


Follow Up

Relevant photos are attached.

Photo Remarks

MARYLAND BAR CENTER - Item #1



TYPICAL - UNSEALED PENETRATION



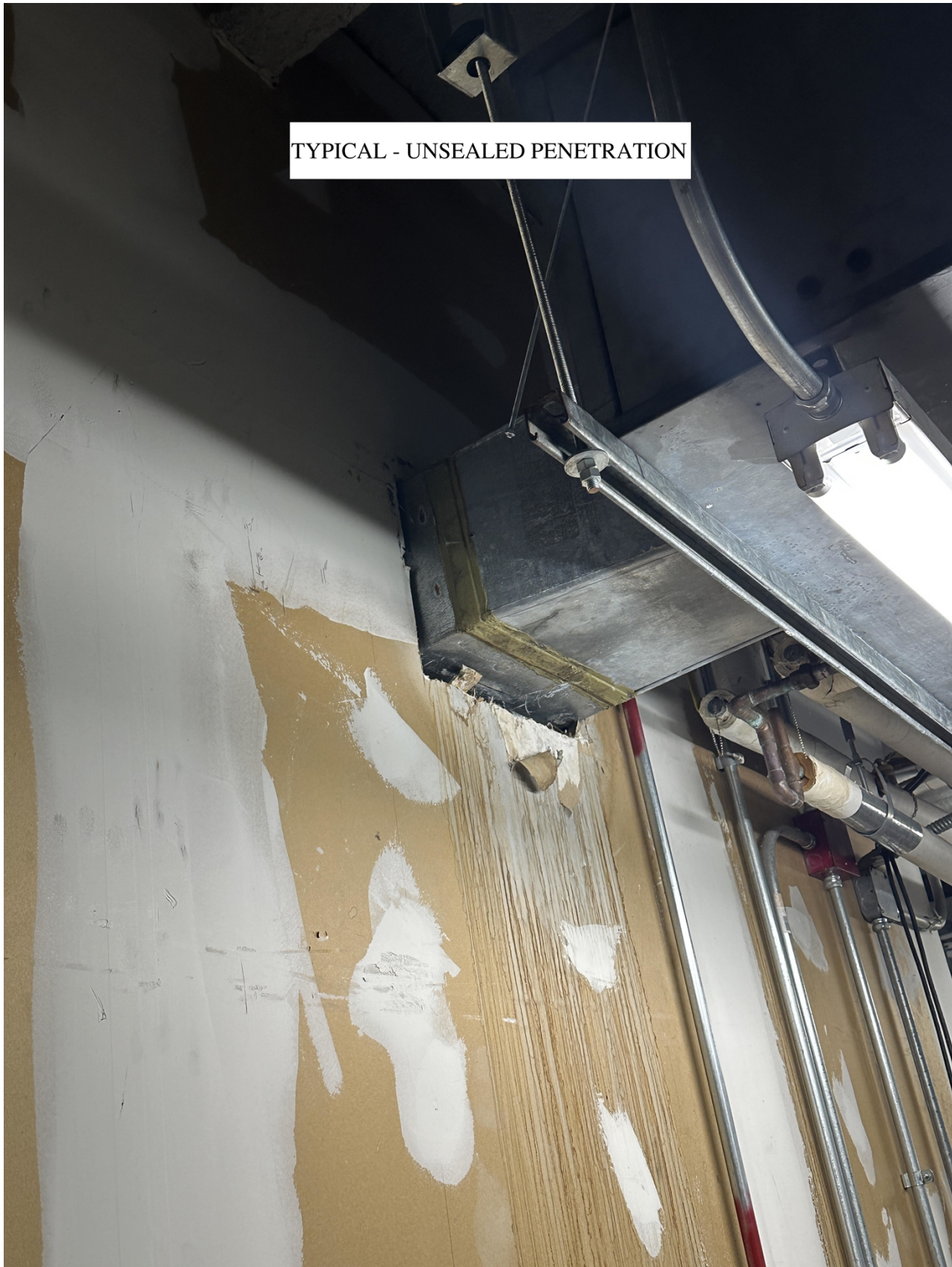
TYPICAL - MISSING FIREPROOFING



TYPICAL - NO FIRE DAMPERS



TYPICAL - UNSEALED PENETRATION



INSTITUTE OF HUMAN VIROLOGY - Item #1



26 Tol
8 H/W

78 7/8

GENERAL RESEARCH BUILDING - Item #1



A photograph of a wall in a facility. At the top, a dark horizontal pipe runs across the frame, with a vertical section on the left. Below the pipe, the wall is covered in a light blue, textured material, possibly drywall or plaster, which shows signs of cracking and wear. A large, irregular hole is present in the wall, revealing a dark, fibrous material behind it. Below this hole, the wall is constructed from light-colored, rectangular concrete blocks.

HEALTH SCIENCES RESEARCH FACILITY I - Item #1

HEALTH SCIENCES RESEARCH FACILITY I - Item #2



HOWARD HALL - Item #1



HOWARD HALL - Item #2



HOWARD HALL - Item #3

